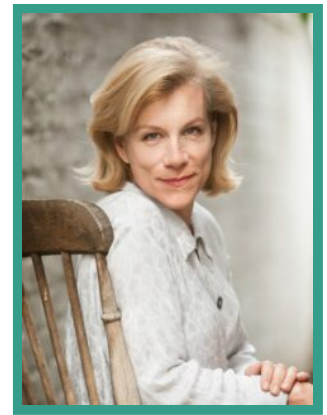


# Juliet Stevenson

· Female

EMMY Nomination 2019 , Outstanding Narrator, Queen of Mystery  
Evening Standard Nomination 2019, Natasha Richardson Award for Best Actress, The Doctor  
What's on Stage Nomination 2019, Best Actress in a Play, The Doctor  
Olivier Nomination 2020, Best Actress in a Play, The Doctor



## THEATRE

| PRODUCTION (ROLE)          | COMPANY                   | PROJECT DETAILS         |
|----------------------------|---------------------------|-------------------------|
| THE DOCTOR                 | Almeida/West End/Broadway | Dir. Robert Icke        |
| ANIMAL FARM                | Theatre Royal, Bath       | DIR. Robert Icke        |
| BLINDESS                   | Donmar Warehouse          | Dir. Walter Meierjohann |
| MARY STUART                | Almeida/West End          | Dir. Robert Icke        |
| WINGS                      | Young Vic                 | Dir. Natalie Abrahami   |
| HAMLET                     | Almeida/West End          | Dir. Robert Icke        |
| HAPPY DAYS                 | Young Vic                 | Dir. Natalie Abrahami   |
| THE HERETIC                | Royal Court               | Dir. Jeremy Herrin      |
| DUET FOR ONE               | Almeida/West End          | Dir. Matthew Lloyd      |
| ALICE TRILOGY              | Royal Court               | Dir. Ian Rickson        |
| THE SEAGULL                | National Theatre          | Dir. Katie Mitchell     |
| WE HAPPY FEW               | West End                  | Dir. Trevor Nunn        |
| THE COUNTRY                | Royal Court               | Dir. Katie Mitchell     |
| PRIVATE LIVES              | National Theatre          | Dir. Philip Franks      |
| THE CAUCASIAN CHALK CIRCLE | National Theatre          | Dir. Simon McBurney     |

|                          |                            |                      |
|--------------------------|----------------------------|----------------------|
| THE DUCHESS OF MALFI     | West End                   | Dir. Philip Franks   |
| SCENES FROM AN EXECUTION | Taper Forum, LA            | Dir. Robert Ackerman |
| DEATH AND THE MAIDEN     | Royal Court/West End       | Dir. Lindsay Posner  |
| BURN THIS                | Hampstead Theatre/West End | Dir. Howard Davies   |
| ON THE VERGE             | Sadler's Wells             | Dir. Tony Harrison   |
| YERMA                    | National Theatre           | Dir. Di Trevis       |
| OTHER WORLS              | Royal Court                | Dir. Richard Wilson  |

## ROYAL SHAKESPEARE COMPANY

| PRODUCTION (ROLE)             | PROJECT DETAILS     |
|-------------------------------|---------------------|
| NOT I, FOOTFALLS, AND ROCKABY | Dir. Katie Mitchell |
| LES LIAISONS DANGEREUSES      | Dir. Howard Davies  |
| AS YOU LIKE                   | Dir. Adrian Noble   |
| TROILUS & CRESSIDA            | Dir. Howard Davies  |
| MEASURE FOR MEASURE           | Dir. Adrian Noble   |
| MIDSUMMER NIGHT'S DREAM       | Dir. Ron Daniels    |
| THE WITCH OF EDMONTON         | Dir. Barry Kyle     |
| MONEYCLARA                    | Dir. Bill Alexander |
| HENRY IV                      | Dir. Bill Alexander |
| ONCE IN A LIFETIME            | Dir. Trevor Nunn    |
| THE WHITE GUARD               | Dir. Barry Kyle     |
| HIPPOLYTUS                    | Dir. Ron Daniels    |
| ANTONY & CLEOPATRA            | Dir. Peter Brook    |

## TELEVISION

| PRODUCTION (ROLE) | COMPANY            | PROJECT DETAILS         |
|-------------------|--------------------|-------------------------|
| THE DEAL          | Gaumont Television | DIR. Jean-Stéphane Bron |

|                                    |                       |                                  |
|------------------------------------|-----------------------|----------------------------------|
| KING AND CONQUEROR                 | CBS Studios           | DIR. Various                     |
| A CRUEL LOVE: THE RUTH ELLIS STORY | SilverPrint Pictures  | DIR. Lee Haven Jones             |
| MOZART: RISE OF A GENIUS           | 72 Films              | DIR. Alice Smith                 |
| PROFESSOR T (Series 2-4)           | ITV                   | DIR. Various                     |
| WOLF                               | BBC One               | DIR. Lee Haven Jones             |
| DEATH IN PARADISE                  | Red Plant Pictures    | Dir. Robert Thorogood            |
| THE MAN WHO FELL TO EARTH          | CBS Studios           | Dir. Joss Agnew & Alex Kurtzman  |
| THE LONG CALL                      | Silverprint Pictures  | Dir. Lee Haven Jones             |
| OUT OF HER MIND                    | BBC2                  | Dir. Ben Blaine and Chris Blaine |
| RIVIERA (Series 2)                 | Archery Pictures      | Dir. Hans Herbots                |
| ONE OF US                          | BBC                   | Dir. Will McGregor               |
| THE ENFIELD HAUNTING               | Eleven Film           | Dir. Kristoffer Nyholm           |
| ATLANTIS (Series 2)                | Urban Myth Films      | Dir. Various                     |
| THE VILLAGE (Series 2)             | Company Pictures      | Dir. Luke Watson                 |
| WHITE HEAT                         | Granada               | Dir. John Alexander              |
| THE HOUR (Series 1)                | Kudos                 | Dir. Harry Bradbeer              |
| ACCUSED                            | BBC                   | Dir. Richard Laxton              |
| LEWIS                              | Granada               | Dir. Nick Renton                 |
| DUSTIN BABY                        | Kindle/BBC            | Dir. Juliet May                  |
| THE SNOW QUEEN                     | SQ Productions        | Dir. Julian Gibbs                |
| GHOST                              | Sky                   | Dir. Mark Ravenhill              |
| PLACE OF EXECUTION                 | Coastal Entertainment | Dir. Dan Percival                |
| TEN DAYS TO WAR                    | BBC                   | Dir. Bruce Goodison              |
| MARPLE – ORDEAL OF INNOCENCE       | Granada               | Dir. Moira Armstrong             |
| HEAR THE SILENCE                   | Zenith                | Dir. Tim Fywell                  |
| THE ROAD FROM COORAIN              | Chapman Pictures      | Dir. Brendan Maher               |
| THE PACT                           | Lifetime              | Dir. Peter Werner                |

|                              |           |                          |
|------------------------------|-----------|--------------------------|
| TRIAL BY FIRE                | Network   | Dir. Patrick Lau         |
| CIDER WITH ROSIE             | Carlton   | Dir. Charles Beeson      |
| STONE SCISSORS PAPER         | BBC       | Dir. Richard Cameron     |
| THE POLITICAN'S WIFE         | Channel 4 | Dir. Graham Theakston    |
| PERFORMANCE – A DOLL'S HOUSE | BBC       | Dir. David Thacker       |
| 4 PLAY                       | Channel 4 | Dir. Thaddeus O'Sullivan |
| OUT OF LOVE                  | BBC       | Dir. Michel Houldey      |
| FREUD                        | BBC       | Dir. Moira Armstrong     |
| THE MALLENS                  | Granada   | Dir. Mary McMurray       |

## FEATURE FILM

| PRODUCTION (ROLE)                  | COMPANY                | PROJECT DETAILS                 |
|------------------------------------|------------------------|---------------------------------|
| REAWAKENING                        | Rustle Up Productions  | DIR. Virginia Gilbert           |
| THE LAST PLANET                    |                        | Dir. Terence Mallick            |
| LET ME GO                          | Evolutionary Films     | Dir. Polly Steele               |
| LOVE IS THICKER THAN WATER         | Barnsbury Pictures     | Dir. Ate De Jong & Emily Harris |
| DEPARTURE                          | Motion Group Pictures  | Dir. Andrew Steggall            |
| BEFORE I GO TO SLEEP               | Scott Free             | Dir. Rowan Joffe                |
| THE LETTERS                        | Big Screen Partners    | Dir. William Riead              |
| DIANA                              | Ecosse Films           | Dir. Oliver Hirschbiegel        |
| TRIAGE                             | Parallel Films         | Dir. Danis Tanovic              |
| DESERT FLOWER                      | Majestic               | Dir. Sherry Horman              |
| SECRET OF MOONACRE                 | Spice Factory          | Dir. Gabor Csupo                |
| A PREVIOUS ENGAGEMENT              | Ashdale Films          | Dir. Joan Carr-Wiggin           |
| WHEN DID YOU LAST SEE YOUR FATHER? | Sony Pictures Classics | Dir. Anand Tucker               |
| BREAKING & ENTERING                | Miramax                | Dir. Anthony Minghella          |
| INFAMOUS                           | Arclight               | Dir. Douglas McGrath            |

|                             |                       |                        |
|-----------------------------|-----------------------|------------------------|
| RED MERCURY                 | Dirty Bomb Films      | Dir. Roy Battersby     |
| PIERREPOINT                 | Granada               | Dir. Adrian Shergold   |
| BEING JULIA                 | Serendipity Point     | Dir. Istvan Szabo      |
| MONA LISA SMILE             | Columbia Pictures     | Dir. Mike Newell       |
| BEND IT LIKE BECKHAM        | 20th Century Fox      | Dir. Gurinder Chadha   |
| NICHOLAS NICKLEBY           | United Artists        | Dir. Doug McGrath      |
| FOOD FOR LOVE               | 42nd St               | Dir. Ventura Pons      |
| THE SEARCH FOR JOHN GISSING | Dyno-B Films          | Dir. Mike Binder       |
| EMMA                        | Miramax               | Dir. Doug McGrath      |
| THE SECRET RAPTURE          | British Screen        | Dir. Howard Davies     |
| THE TRIAL                   | BBC                   | Dir. David Jones       |
| TRULY MADLY DEEPLY          | BBC                   | Dir. Anthony Minghella |
| THE MARCH                   | BBC                   | Dir. David Wheatley    |
| LADDER OF SWORDS            | Serve Ltd             | Dir. Norman Hullmanga  |
| DROWNING BY NUMBERS         | Allarts Entertainment | Dir. Peter Greenaway   |

## THEATRE AWARDS

| PRODUCTION (ROLE)            | COMPANY                  | PROJECT DETAILS          |
|------------------------------|--------------------------|--------------------------|
| Laurence Olivier Awards 2010 | Best Actress (Nominated) | DUET FOR ONE             |
| Laurence Olivier Awards 1992 | Best Actress (Winner)    | DEATH & THE MAIDEN       |
| Time Out Awards 1992         | Best Actress (Winner)    | DEATH & THE MAIDEN       |
| Laurence Olivier Awards 1997 | Best Actress (Nominated) | YERMA                    |
| Laurence Oliver Awards 1984  | Best Actress (Nominated) | MEASURE FOR MEASURE      |
| Drama Magazine Awards 1984   | Best Actress (Winner)    | MEASURE FOR MEASURE      |
| Laurence Olivier Awards      | Best Actress (Nominated) | LES LIASIONS DANGEREUSES |
| Laurence Olivier Awards      | Best Actress (Nominated) | AS YOU LIKE IT           |
| Laurence Olivier Awards      | Best Actress (Nominated) | TROILUS & CRESSIDA       |

TELEVISION AND FILM AWARDS

| PRODUCTION (ROLE)                      | COMPANY                    | PROJECT DETAILS       |
|--|----------------------------|-----------------------|
| Women In Film & Television Awards 2018 | Lifetime Achievement Award |                       |
| BAFTA 2011                             | Best Actress (Nominated)   | THE ACCUSED           |
| Golden Dagger Awards 2009              | Best Actress (Winner)      | PLACE OF EXECUTION    |
| AFI Awards 2002                        | Best Actress (Winner)      | THE ROAD FROM COORAIN |
| BAFTA 1996                             | Best Actress (Nominated)   | THE POLITICIAN'S WIFE |
| BAFTA 1993                             | Best Actress (Nominated)   | A DOLL'S HOUSE        |
| BAFTA 1992                             | Best Actress (Nominated)   | TRULY MADLY DEEPLY    |
| Evening Standard Film Awards 1992      | Best Actress (Winner)      | TRULY MADLY DEEPLY    |