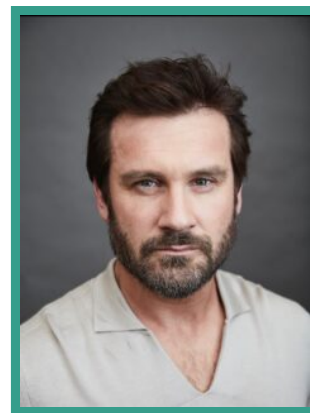


Clive Standen

Actor · Male



FEATURE FILM

| PRODUCTION (ROLE) | COMPANY | PROJECT DETAILS |
|---------------------------|-----------------------------|--------------------------|
| CLEAR CUT | Lionsgate | Dir. Brian Skiba |
| ONCE UPON A TIME IN TEXAS | Silver Sail Entertainment | DIR. Tanner Beard |
| COLD DECK | Lionsgate | DIR. Brian Skiba |
| BOUDICA | Bleiberg Entertainment | DIR. Jesse V. Johnson |
| SHEPHARD | | Dir. Isaac Walsh |
| VENDETTA | Bar None Productions | Dir. Jared Cohn |
| POSSESSIONS | Paperclip Limited | Dir. Brent Cote |
| VAULT | Verdi productions | Dir. Tom Denucci |
| VENDETTA | Bar None Productions | Dir. Jared Cohn |
| IN LIKE FLYNN | 308 Ent, ILF AU Productions | Dir. Russell Mulcahy |
| PATIENT ZERO | Screen Gems | Dir. Stefan Ruzowitzky |
| EVEREST | Cross Creek Pictures | Dir. Baltasar Kormakur |
| HAMMER OF GODS | Vertigo Films | Dir. Farren Blackburn |
| NAMASTEY LONDON | Blockbuster Pictures | Dir. Vipal Amrutlal Shah |
| HEROES AND VILLAINS | Vertigo Films | Dir. Selwyn Roberts |

| | | |
|-------------------------|------------------|-------------------|
| TOM BROWN'S SCHOOL DAYS | Company Pictures | Dir. David Moore |
| TEN DAYS TO D-DAY | 3bm Television | Dir. Marion Milne |
| ALEXANDER | Warner Bros. | Dir. Oliver Stone |

TELEVISION

| PRODUCTION (ROLE) | COMPANY | PROJECT DETAILS |
|------------------------------|---|---|
| SANCTUARY: A WITCH'S TALE S2 | AMC+ | DIRS. Hannah Quinn & Dathai Keane |
| WINTER PALACE | Netflix | DIRS. Pierre Monnard & Christine Wiederkehr |
| THE MORNING SHOW | Apple TV | Dir. Mimi Leder |
| OBLITERATED | Netflix | DIR. Various |
| COUNCIL OF DADS | NBC | |
| MIRAGE | FRTV/Cineflix | Dir. Louis Choquette |
| TAKEN | Europacorp Television, Universal Television | Dir. Various |
| VIKINGS | History Channel (Series 1, 2 & 3) | Dir. Various |
| ATLANTIS | Little Monster Ltd | Dir. Justin Molotnikov |
| CAMELOT | Starz | Dir. Various |
| ROBIN HOOD (Regular) | BBC | Dir. Matthew Evans |
| DOCTOR WHO | BBC | Dir. Douglas MacKinnon |
| OPERATION CERTAIN DEATH | CH5 / Discovery | Dir. David Hickman |
| DOCTORS | BBC | Dir. Farren Blackburn |
| WAKING THE DEAD | BBC | Dir. Andy Hay |
| KING JOHN | Stage Screen Prod. | Dir. James Kerr |

SHORT FILM

| PRODUCTION (ROLE) | COMPANY | PROJECT DETAILS |
|-------------------------------|-------------------|------------------------|
| THE HEART OF DICKEN PARTRIDGE | | Dir. Laura Evers Johns |
| MOSCOW THE HOME WRECKER | Action Verb Films | Dir. Jade Carman |

| | | |
|-----------------|------------------|---------------------------|
| FLARE | Spool Films | Dir. The Turrell Brothers |
| AWAY (Narrator) | 10 to 1 Pictures | Dir. John Langridge |

THEATRE

| PRODUCTION (ROLE) | COMPANY | PROJECT DETAILS |
|-----------------------|---------------------|----------------------|
| THE INVENTION OF LOVE | Salisbury Playhouse | Dir. Richard Beecham |

RADIO

| PRODUCTION (ROLE) | COMPANY | PROJECT DETAILS |
|-----------------------------|-------------|-------------------|
| THE CONFESSIONS | BBC Radio 4 | Dir. Kate McAll |
| SCENES FROM PROVINCIAL LIFE | BBC Radio | Dir. David Blount |