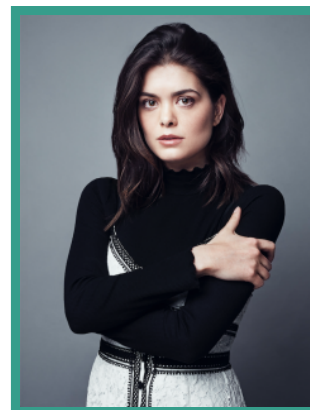


Samantha Colley

Actor · Female



TELEVISION

| PRODUCTION (ROLE) | COMPANY | PROJECT DETAILS |
|-------------------|---------------------------------------|---|
| ARCHIE | BritBox | Dir. Paul Andrew Williams |
| INVASION | Genre Films | Dir. Various |
| BRITANNIA | Vertigo Films/Neal Street Productions | Dirs. Rob Savage and Lisa James Larsson |
| GENIUS: PICASSO | NATIONAL GEOGRAPHIC/FOX/IMAGINE ENT | Dir. Kenneth Biller |
| GENIUS: EINSTEIN! | NATIONAL GEOGRAPHIC/FOX/IMAGINE ENT | Dir. Ron Howard |
| VICTORIA | MAMMOTH/ITV | Dir. Oliver Blackburn |
| ENDEAVOUR | MAMMOTH SCREEN/ITV | Dir. Olly Blackburn |

FEATURE FILM

| PRODUCTION (ROLE) | COMPANY | PROJECT DETAILS |
|-------------------------|--------------------------------|---------------------------------------|
| SOLO: A STAR WARS STORY | Lucasfilm/Walt Disney Pictures | Dir. Ron Howard |
| THE CRUCIBLE | CinemaLive | Dirs. Yaël Farber and Robert Delamere |

SHORT FILM

| PRODUCTION (ROLE) | COMPANY | PROJECT DETAILS |
|-------------------|---------|-----------------|
|-------------------|---------|-----------------|

THE VELVETEEN RABBIT

Magic Light Pictures

Dirs. Jennifer Perrott and Rick Thiele

TUESDAY

MORDUE PICTURES

Dir. Talitha Stevenson

THEATRE

| PRODUCTION (ROLE) | COMPANY | PROJECT DETAILS |
|---------------------------------|--------------------------------------|----------------------|
| KLIPPIES | Southwark Playhouse | Dir. Chealsea Walker |
| FAR AWAY | The Young Vic | Dir. Kate Hewitt |
| THE CRUCIBLE (Abigail Williams) | Old Vic | Dir. Yael Farber |
| ANNA KARENINA (Anna Karenina) | Royal Court / Oxford School of Drama | Dir. Robin Belfield |
| LOVE LABOUR'S LOST | The Studios / Oxford School of Drama | Dir. George Peck |
| DYING FOR IT | The Studios / Oxford School of Drama | Dir. Vicky Jones |
| TAMING OF THE SHREW | Garden Tour / Oxford School of Drama | Dir. Juliet Seal |