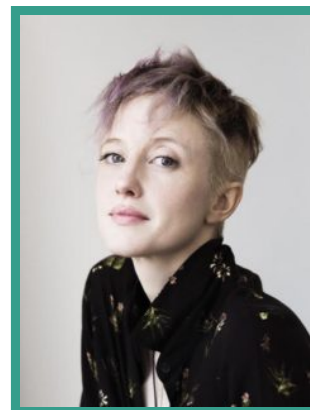


# Andrea Riseborough

Actor · Female



## FEATURE FILM

PRODUCTION (ROLE)	COMPANY	PROJECT DETAILS
GEECHEE	AGC Studios	Dir. DuBois Ashong
FUNNY BIRDS	Cheyenne Federation	Dir. Marco La Via, Hanna Ladoul
ALPHA GANG	PASTEL	Dir. David Zellner, Nathan Zellner
LEE	Hopscotch Features	Dir. Ellen Kuras
WHAT REMAINS	Business Finland	Dir. Ran Huang
ROALD DAHL'S MATILDA THE MUSICAL	Working Title Films	Dir. Matthew Warchus
AMSTERDAM	20th Century Studios	David O. Russell
TO LESLIE	BCDF Pictures	Dir. Michael Morris
PLEASE BABY PLEASE	Rivulet Media	Dir. Amanda Kramer
THE ELECTRICAL LIFE OF LOUIS WAIN	Amazon Studios	Dir. Will Sharpe
HERE BEFORE	BBC Films	Dir. Stacey Gregg
LUXOR	Film Clinic, Front Row Filmed Entertainment	Dir. Zeina Durra
POSSESSOR	Rhombus Media	Dir. Brandon Cronenberg
THE GRUDGE	Ghost House Pictures	Dir. Nicolas Pesce
THE KINDNESS OF STRANGERS	Creative Alliance	Dir. Lone Scherfig

BURDEN	The Firm	Dir. Andrew Heckler
NANCY	Mental Pictures	Dir. Christina Choe
MANDY	SpectreVision	Dir. Panos Cosmatos
THE DEATH OF STALIN	Main Journey, Free Range Films, Quad Productions	Dir. Armando Iannucci
BATTLE OF THE SEXES	Cloud Eight Films, Decibel Films, Fox Searchlight Pictures	Dir. Jonathan Dayton   Valerie Faris
MINDHORN	BBC Films, Pinewood Pictures, Netflix, StudioCanal	Dir. Sean Foley
NOCTURNAL ANIMALS	Artina Films, Fade to Black Productions, Focus Features	Dir. Tom Ford
SHEPHERDS AND BUTCHERS	Distant Horizon, Videovision Entertainment	Dir. Oliver Schmitz
HIDDEN	Primal Pictures, Warner Bros.	Dir. Matt Duffer
THE SILENT STORM	Neon Films, Cacti Films, British Film Company	Dir. Corinna McFarlane
BIRDMAN	New Regency Pictures, M Prods, Grisbi Productions	Dir. Alejandro González Iñárritu
OBLIVION	Universal Pictures, Relativity Media, Monolith Pictures	Dir. Joseph Kosinski
WELCOME TO THE PUNCH	Worldview Entertainment, Between The Eyes, Automatik Entertainment	Dir. Eran Creevy
DISCONNECT	LD Entertainment, Liddell Entertainment, Exclusive Media Group	Dir. Henry Alex Rubin
SHADOW DANCER	BBC Films/Element Pictures/Irish Film Board	Dir. James Marsh
RESISTANCE	Big Rich Films, Film Agency for Wales, SquareOne Entertainment	Dir. Amit Gupta
W.E.	Semtex Films, IM Global	Dir. Madonna
BRIGHTON ROCK	StudioCanal, BBC Films, UK Film Council	Dir. Rowan Joffe
MADE IN DAGENHAM	Audley Films	Dir. Nigel Cole
NEVER LET ME GO	DNA Films, Film4, Fox Searchlight Pictures	Dir. Mark Romanek
MAD BAD & SAD	Ipso Facto Films, Moxie Makers, Roister Doister Films	Dir. Avie Luthra
HAPPY GO LUCKY	Film4, Ingenious Film Partners, Summit Entertainment	Dir. Mike Leigh
MAGICIANS	Breakout Films, Intermedia Films, Universal Pictures	Dir. Andrew O'Connor
VENUS	Miramax, FilmFour, UK Film Council	Dir. Roger Michell

## TELEVISION

PRODUCTION (ROLE)	COMPANY	PROJECT DETAILS
THE REGIME	Warner Bros. Discovery	Dirs. Various
ALICE AND JACK	Me and You Productions	Dir. Hong Khaou
THE PALACE	Warner Bros Discovery, HBO	Dir. Stephen Frears, Jessica Hobbs
ZEROZEROZERO	Cattleya	Dirs. Janus Metz, Pablo Trapero & Stefano Sollima
WACO	Paramount Network	Dirs. John Erick Dowdle, Dennie Gordon
BLACK MIRROR	Netflix	Dir. John Hillcoat
THE WITNESS FOR THE PROSECUTION	Mammoth Screen/BBC/Agatha Christie Productions	Dir. Julian Jarrold
NATIONAL TREASURE	Channel 4	Dir. Marc Munden
BLOODLINE	KZK Productions/Sony Pictures Television	Dir. Ed Bianchi
THE MONEY	Linson Entertainment	Dir. Justin Chadwick
THE DEVIL'S MISTRESS	Channel 4	Dir. Marc Munden
THE LONG WALK TO FINCHLEY	BBC	Dir. Niall MacCormick
BEING HUMAN	BBC	Dir. Declan O'Dwyer
PARTY ANIMALS	BBC	Dir. Brian Grant
THE SECRET LIFE OF MRS. BEETON	BBC	Dir. Jon Jones
DOC MARTIN	ITV	Dir. Minkie Spiro
A VERY SOCIAL SECRETARY	ITV	Dir. Jon Jones
WHATEVER LOVE MEANS	ITV	Dir. David Blair

## THEATRE

PRODUCTION (ROLE)	COMPANY	PROJECT DETAILS
THE PRIDE	MCC Theatre	Dir. Joe Mantello
IVANOV	Donmar at Wyndhams	Dir. Michael Grandage
A COUPLE OF POOR, POLISH-SPEAKING ROMANIANS	Soho Theatre	Dir. Lisa Goldman
THE PAIN AND THE ITCH	The Royal Court	Dir. Dominic Cooke

BURN/CHATROOM/CITIZENSHIP	National Theatre	Dir. Anna Mackmin
MISS JULIE / MEASURE FOR MEASURE	Bath Season	Dir. Peter Hall
A BRIEF HISTORY OF HELEN OF TROY	Soho Theatre	Dir. Gordon Anderson

## SHORT FILM

PRODUCTION (ROLE)	COMPANY	PROJECT DETAILS
THE STATE OF US	Litmus Pictures	Dir. Georgia Oakley
ACTRESS	Blue Shadow Films	Dir. Daisy Lewis
THAT DOG	Jash Network	Dir. Nick Thornburn
LOVE YOU MORE	Film4	Dir. Sam Taylor-Johnson

## SKILLS / QUALIFICATIONS

Alto singer

Classically trained in Ballet to Advanced standard

Qualified stage fighter (BASSC)