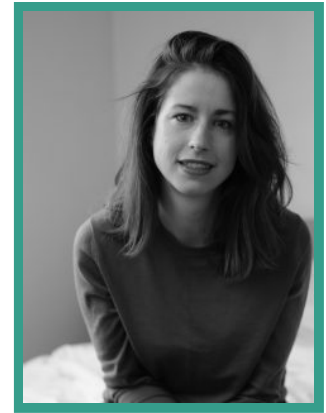


Caroline Byrne

Director

Represented by:

Jessica Stewart



Caroline is an Irish director working throughout the UK and Ireland. Her novel approach and characteristic innovation continuously produce groundbreaking pieces which span multiple genres. Her work has been described as fiercely intelligent, full of invention and visually stunning by critics. Her work can be seen in the upcoming production of Portia Coughlan by Marina Carr at the Young Vic Theatre, starring Ruth Negga. For reviews and her portfolio visit carolinebyrne.info Caroline has directed significant productions for Emma Rice's inaugural season at Shakespeare's Globe, for Graham McLaren's first season at the Abbey Theatre and for Kwame Kwei-Armah's opening season at The Young Vic. She has also directed at Sam Wanamaker Playhouse, Regents Park Theatre, Bush Theatre, RSC, Lyric Hammersmith, Bristol Old Vic, Birmingham Rep, and Gate Theatre where she was Associate Director.

THEATRE - DIRECTOR

DATE	PRODUCTION (ROLE)	COMPANY	PROJECT DETAILS
2020	Portia Coughlan	Young Vic	
2020	Faustus: That Damned Woman	Headlong/ Lyric Hammersmith/ UK Tour	
2019	The Wheel	Milton Court Theatre	
2019	Woman and Scarecrow	RADA	
2018	Spring Awakening	Young Vic Theatre	
2018	All's Well That Ends Well	Shakespeare's Globe Theatre	
2017	Katie Roche	National Theatre Ireland - Abbey, Dublin	
2017	Oliver Twist	Regent's Park Open Air Theatre	
2016	The Two Gentlemen of Verona	Richard Burton Theatre	
2016	The Taming of the Shrew	Shakespeare's Globe Theatre	
2016	Parallel Macbeth	Young Vic Theatre	
2015	Macbeth	Chapter Arts Centre	
2015	Old Vic New Voices Festival	Old Vic Theatre	

2015	Electra	Caird Studio Cardiff	
2015	Eclipsed	Gate Theatre	
2013	Text Messages; Macbeth	Project Arts Dublin	
2012	Shakespeare in a Suitcase	RSC	Co-dir. Tim Crouch

THEATRE - ASSOCIATE DIRECTOR

DATE	PRODUCTION (ROLE)	COMPANY	PROJECT DETAILS
2013	Adler and Gibb	Royal Court Theatre	Dir. Tim Crouch
2013 / 2014	Grounded	Gate/ Traverse Theatre/ Tour	Dir. Chris Haydon
2013 / 2014	Wendy and Peter Pan	RSC	Dir. Jonathan Mumby
2012	King Lear	YPS Royal Shakespeare Company	Dir. Tim Crouch

ADDITIONAL WORK AND ASSOCIATIONS

DATE	PRODUCTION (ROLE)	COMPANY
	Education Associate Practitioner	Royal Shakespeare Company
2014 - 2015	Associate Director	The Gate Theatre
2008 - 2011	Creative Projects Manager	Actors Professional Centre