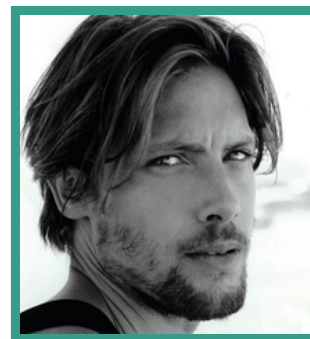


James Rousseau

Actor · Male

For the last ten years James has been a successful model heading campaigns and high-end commercials for Emporio Armani, L'Oreal, Paco Rabanne, Hugo Boss, H&M and most recently Nina Ricci.



FEATURE FILM

PRODUCTION (ROLE)	COMPANY	PROJECT DETAILS
I GIVE IT A YEAR	Studio Canal	Dir. Dan Mazer
THE HOLE	Impact Pictures	Dir. Nick Hamm

TELEVISION

PRODUCTION (ROLE)	COMPANY	PROJECT DETAILS
THE BASTARD EXECUTIONER	FX Network	Dir. Paris Barclay

SKILLS / QUALIFICATIONS

He trained at Stella Adler