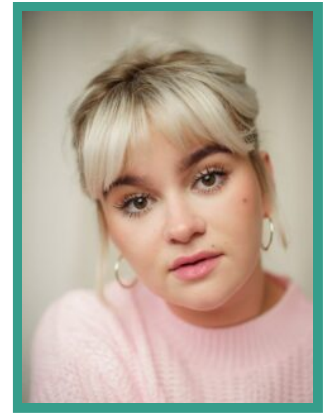


Lola Shalam

Guildhall School of Music & Drama



THEATRE

PRODUCTION (ROLE)	COMPANY	PROJECT DETAILS
AS YOU LIKE IT (Rosalind)	The Globe	Dir. Sean Holmes & Charlie Josephine
ROMEO & JULIET (Juliet)	The Globe	Dir. Sean Holmes
GIGI & DAR (Dar)	Arcola Theatre	Dir. Kathryn Hunter
MACBETH (Third Witch)	Wessex Grove and Underbelly	Dir. Simon Godwin
WOMEN, BEWARE THE DEVIL (Mary)	Almeida Theatre	Dir. Rupert Goold
OUR TOWN (Mrs Webb)	Guildhall	Dir. Dir. John Haidar
EVERYMAN (Sister/ Discretion)	Guildhall	Dir. Katherine Nesbitt
LUNGS (W)	Guildhall	Dir. Titas Halder
UNCLE VANYA (Sonya)	Guildhall	Dir. Sophie Moniram
LITTLE MISS (Peaches)	Guildhall	Written / Directed by Lola Shalam
PARTS PER MILLION (Climate Scientist Guy)	Guildhall	Dir. Patsy Rodenburg
OEDIPUS/KING LEAR (Edgar/Chorus)	Guildhall	Dir. Patsy Rodenburg
WHO'S AFRAID OF VIRGINIA WOLFF (Martha)	Guildhall	Dir. Anastasia Osei-Kuffour)

TELEVISION



INDEPENDENT TALENT GROUP LTD

40 WHITFIELD STREET LONDON W1T 2RH

TEL: +44 (0)20 7636 6565 FAX: +44 (0)20 7323 0101

REGISTERED IN ENGLAND NUMBER 4338525 EMPLOYMENT AGENCY,
REGISTERED OFFICE 40 WHITFIELD STREET LONDON W1T 2RH

PRODUCTION (ROLE)	COMPANY	PROJECT DETAILS
MYKITO (Rosie)	A24 for HBO & BBC	Dir. Michaela Coel & Sam Miller
GRANTCHESTER (Kara Quinn)	ITV	Dir. Chlöe Quinn
QUARTER LIFE (Rude Girl)	Left Handed & Jax Media for Amazon	Dir. Bassam Tariq