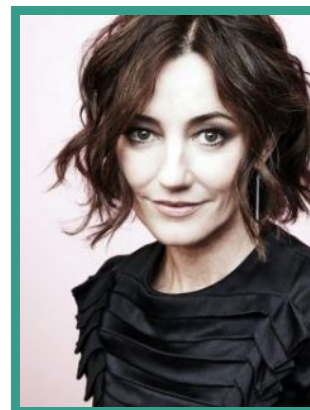


Orla Brady

Actor · Female



TELEVISION

| PRODUCTION (ROLE) | COMPANY | PROJECT DETAILS |
|------------------------------|------------------------------|-----------------------|
| COLLATERAL | The Forge | Dir. S.J. Clarkson |
| INTO THE BADLANDS (3 Series) | AMC | Dirs. Various |
| AMERICAN ODYSSEY | NBC | Dir. Various |
| BANISHED | BBC | Dir. Dan Percival |
| DR WHO | BBC | Dir. Jamie Payne |
| POIROT | ITV | Dir. Andy Wilson |
| LE GRAND | ATLANTIQUE PRODUCTIONS | Dir. Alfred Lot |
| SINBAD | IMPOSSIBLE PICTURES/BBC | Dir. Marisol Torres |
| ETERNAL LAW | | Dir. Adrian Shergold |
| THE DEEP | TIGER ASPECT PRODUCTIONS/BBC | Dir. Colm McCarthy |
| STRIKEBACK | LEFT BANK PICTURES | Dir. Daniel Percival |
| MISTRESSES | Ecosse Films | |
| WALLANDER | LEFT BANK PICTURES/BBC | Dir. Niall MacCormick |
| NIP/TUCK | Warner Brothers | |
| DEATH IN PARADISE | RED PLANET PICTURES/BBC | Dir. Arthur Albert |
| WORLD OF TROUBLE | NBC | |

| | | |
|--|------------------------|----------------------|
| REVELATIONS | NBC | |
| LAWLESS | COMPANY PICTURES | Dir. Roger Gartland |
| EMPIRE | ABC | |
| HUSTLE | Kudos | Dir. Bharat Nalluri |
| PROOF | RTE (Series 1 & 2) | Dir. Ciaran Donnelly |
| SERVANTS | BBC | Dir. Hetty MacDonald |
| THE DEBT | BBC | Dir. Jon Jones |
| FAMILY LAW | US Series | |
| THE MAGICAL LEGEND OF THE LEPRECHAUNS | HALLMARK ENTERTAINMENT | Dir. John Henderson |
| PURE WICKEDNESS | BBC | Dir. Harry Hook |
| WUTHERING HEIGHTS (Cathy) | LWT | Dir. David Skynner |
| NOAH'S ARK | Carlton | Dir. AJ Quinn |
| THE HEART SURGEON | BBC | Dir. Audrey Cook |
| THE VICAR OF DIBLEY - CHRISTMAS SPECIAL 1996 | BBC | |
| OUT OF THE BLUE | BBC (2 Series) | |
| DANGERFIELD | BBC (2 Eps.) | Dir. Di Patrick |
| ABSOLUTELY FABULOUS | BBC | Dir. John Plowman |

FEATURE FILM

| PRODUCTION (ROLE) | COMPANY | PROJECT DETAILS |
|---------------------------------------|----------------------------|---------------------------------------|
| A GIRL FROM MOGADISHU (Emer Costello) | Pembridge Pictures | Dir. Mary McGuckian |
| ROSE PLAYS JULIE (Ellen) | Desperate Optimists | Dirs. Joe Lawlor and Christine Molloy |
| THE FOREIGNER (Mary) | STX ENTERTAINMENT | Dir. Martin Campbell |
| THE PRICE OF DESIRE | EG PRODUCTIONS | Dir. Mary McGuckian |
| 32A | JANEY PICTURES | Dir. Marian Quinn |
| HOW ABOUT YOU | BEYOND FILMS | Dir. Anthony Byrne |
| FOGBOUND | INTERMEDIA FILMS | Dir. Ate De Jong |
| LUZHIN DEFENSE | CLEAR BLUE SKY PRODUCTIONS | Dir. Marleen Gorris |
| A LOVE DIVIDED | BBC | Dir. Sid McCarthy |

THEATRE

| PRODUCTION (ROLE) | COMPANY | PROJECT DETAILS |
|--|------------------------------|--------------------------|
| TRIPTYCH | | Dir. Sean Mathias |
| BLINDED BY THE SUN | National Theatre | Dir. Ron Daniels |
| PLAYBOY OF THE WESTERN WORLD (Pegeen Mike) | Crucible Theatre , Sheffield | Dir. Robert Delamere |
| THE FALL OF THE HOUSE OF USHER (Madeline) | Contact Theatre, Manchester | Dir. Bryan Elsley |
| A LOVE SONG FOR ULSTER (Kate) | Tricycle Theatre (Trilogy) | Dir. Nicholas Kent |
| PHILADELPHIA, HERE I COME (Kate Doogan) | Wyndams Theatre | Dir. Dan Crawford |
| THREE SISTERS (Natasha) | Gate Theatre, Dublin | Dir. Adrian Noble |
| HAMLET (Ophelia) | European Tour | Dir. Paul O'Hanrahan |
| THE HOUSE OF BERNARDA ALBA (Adela) | Gate Theatre Dublin | Dir. Ben Barnes |
| REBECCA | Lyric Theatre, Belfast | Dir. Charles Nowasielski |