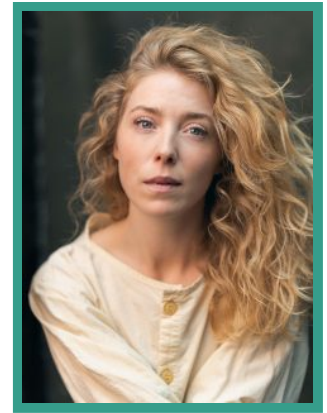


# Hannah Morrish

*Represented by:*

Deborah Willey



## THEATRE

PRODUCTION (ROLE)	COMPANY	PROJECT DETAILS
THE LINE OF BEAUTY	Almeida	Dir. Michael Grandage
THE BRIGHTENING AIR	Old Vic	Dir. Conor McPherson
THE CONFESSIONS	A Zeldin Company	Dir. Alexander Zeldin
THE MERCHANT OF VENICE 1936 (West End)	Trafalgar Theatre	Dir. Brigid Larmour
THE MERCHANT OF VENICE 1936	RSC/ Trafalgar Entertainment	Dir. Brigid Larmour
THE DARKEST PART OF THE NIGHT	Kiln Theatre	Dir. Nancy Medina
CANCELLING SOCRATES	Jermyn Street Theatre	Dir. Tom Littler
HOLE	Jermyn Street Theatre	Dir. Emma Butler
RENAISSANCE	Sotto Voce	Dir. Emma Butler
ALL'S WELL THAT ENDS WELL	Jermyn Street Theatre/GSC	Dir. Tom Littler
ANTONY AND CLEOPATRA	National Theatre	Dir. Simon Godwin
CORIOLANUS	RSC/Barbican	Dir. Angus Jackson
JULIUS CAESAR	RSC/Barbican	Dir. Angus Jackson
TITUS ANDRONICUS	RSC/Barbican	Dir. Blanche McIntyre
ARMS AND THE MAN	Watford Palace Theatre	Dir. Brigid Larmour

## TELEVISION

PRODUCTION (ROLE)	COMPANY	PROJECT DETAILS
BOTY: THE LIFE AND TIMES OF A FORGOTTEN ARTIST	Mono Media Films	Dir. Lee Cogswell
FATHER BROWN	BBC Studios	Darcia Martin
OVID FROM THE RSC: THE WORLD'S GREATEST STORYTELLER	RSC/BBC Four	Dir. John O'Rourke and Greg Doran
CALL THE MIDWIFE	BBC	Dir. Sheree Folkson

## FEATURE FILM

PRODUCTION (ROLE)	COMPANY	PROJECT DETAILS
MAGPIE	Paul Cook Film	Dir. Carmel Hannant

## SHORT FILM

PRODUCTION (ROLE)	COMPANY	PROJECT DETAILS
CERES	Kusini Productions	Dir. Amelia Sears
NELL AND PAULINE	Thirty Three Pictures	Dir. Zoé Ford Burnett
NO MORE KINGS	Old Rope Films	Dir. Roger Jean Nsengiyumva
ARCADE	BFI	Dir. Nida Manzoor

## REHEARSED READING

PRODUCTION (ROLE)	COMPANY	PROJECT DETAILS
HENRY VIII	Shakespeare's Globe	Dir. Amy Hodge
STORM TED	NT Studio	Dir. Moira Buffini

## WORKSHOP

PRODUCTION (ROLE)	COMPANY	PROJECT DETAILS
THE OTHER PLACE	A Zeldin Company	Dir. Alexander Zeldin

TROUBLE IN MIND	NT Studio	Dir. Nancy Medina
THE WEDDING	NT Studio	Dir. Rufus Norris