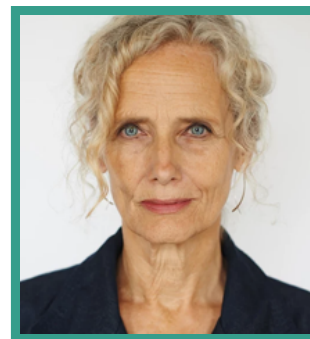


# Barbara Marten

Actor · Female

Barbara can currently be seen in THE DEVIL'S HOUR for Hartswood Films/Amazon Studios, playing the role of 'Sylvia'. Barbara has just finished filming the second series of DALGLIESH, for Acorn/ New Pictures. Recent credits include THE TWIN, for Don Films, A DISCOVERY OF WITCHES for Sky One, RUTHERFORD & SON at the National Theatre, MRS WILSON for the BBC, opposite Ruth Wilson, the feature film THE TURNING along side Mackenzie Davis, RIVIERA for Sky Atlantic and SANCTUARY. Barbara is well known for the critically acclaimed and award winning play PEOPLE, PLACES & THINGS which transferred from the National Theatre to Wyndhams West End and then onwards to New York where it played at the St Ann's Warehouse.



## FEATURE FILM

| PRODUCTION (ROLE)                       | COMPANY                       | PROJECT DETAILS                         |
|---|-------------------------------|---|
| THE TWIN (Helen)                        | Don Films                     | Dir. Taneli Mustonen                    |
| THE TURNING (Mrs Grose)                 | Amblin Entertainment          | Dir. Floria Sigismondi                  |
| MAKING NOISE QUIETLY (May)              | Open Palm Films               | Dir. Dominic Dromgoole                  |
| HAMLET                                  | Hamlet the Film               | Dir. Sarah Frankcom & Margaret Williams |
| ORANGE AND SUNSHINE                     | Screen Australia              | Dir. Jim Loach                          |
| 20:01 (Short)                           | BBC Studios & Post Production | Dir. Richard Platt                      |
| CAPTURE ANTHOLOGIEE: FABLES & FAIRTALES | A1 Pictures                   | Dir. Christopher Abbott                 |
| MOTHER, MINE (Short)                    | South Yorkshire Filmmakers    | Dir. Susan Everett                      |
| BETWEEN TWO WOMEN (Ellen)               | North Country Pictures        | Dir. Steven Woodcock                    |
| GOOD BYE MY LOVE (Jean)                 |                               | Dir. Richard Signy                      |
| A MONTH IN THE COUNTRY                  | Channel Films                 | Dir. Pat O'Connor                       |

## THEATRE

| PRODUCTION (ROLE) | COMPANY          | PROJECT DETAILS    |
|-------------------|------------------|--------------------|
| RUTHERFORD & SON  | National Theatre | Dir. Polly Findlay |

|                                  |  |                        |
|----------------------------------|--|------------------------|
| SPRING AWAKENING (Mrs Gabor)     | Young Vic                                      | Dir. Caroline Byrne    |
| PEOPLE PLACES & THINGS           | St. Ann's Warehouse (New York)                 | Dir. Duncan Macmillan  |
| AN INSPECTOR CALLS (Mrs Birling) | The Playhouse Theatre (West End)               | Dir. Julian Webber     |
| PEOPLE PLACES & THINGS           | National Theatre Dorfman / Wyndhams (West End) | Dir. Duncan Macmillan  |
| WAR AND PEACE                    | National Theatre                               | Dir. Nancy Meckler     |
| KING JOHN                        | The Globe Theatre                              | Dir. James Dacre       |
| GABRIEL                          | The Globe Theatre                              | Dir. Jonathan Fensom   |
| HENRY IV                         | The Globe Theatre                              | Dir. Dominic Dromgoole |
| BEDLAM                           | The Globe Theatre                              |                        |
| THE BIBLE                        | The Globe Theatre                              |                        |
| HAMLET                           | Royal Exchange                                 | Dir. Sarah Frankcom    |
| WHO'S AFRAID OF VIRGINIA WOOLF   | Royal Exchange Manchester                      | Dir. Edward Albee      |

## TELEVISION

| PRODUCTION (ROLE)                        | COMPANY   | PROJECT DETAILS                |
|--|---|--------------------------------|
| DALGLIESH (Janet Carpenter)              | Acorn / New Pictures                              | Dir. Andy Tohill / Ryan Tohill |
| THE DEVIL'S HOUR (Sylvia)                | Hartwood for Amazon                               | Dir. Johnny Allan              |
| A DISCOVERY OF WITCHES (Queen Elizabeth) | Bad Wolf for Sky 1                                | Dir. Farren Blackburn          |
| SANCTURY (Margot)                        | Studio Canal                                      | Dir. Oskar Thor Axelsson       |
| RIVIERA (Edith)                          | Sky Atlantic                                      | Dir. Hans Herbots              |
| MRS WILSON (Mrs McKelvie)                | Snowed In Productions (Brontë Film & TV) for BBC1 | Dir. Richard Laxton            |
| THE MILL                                 | Darlow Smithson Productions                       | Dir. Various                   |
| FRANKIE                                  | BBC   | Dir. Various                   |
| VERA                                     | ITV   | Dir. Various                   |
| KIDNAP AND RANSOM                        | Projector Pictures                                | Dir. Andy Wilson & David Drury |
| WHITECHAPEL                              | Carnival Film & Television                        | Dir. Various                   |
| PUBLIC ENEMIES                           | Tiger Aspect Productions                          | Dir. Dearbhla Walsh            |

|                               |                      |                                       |
|-------------------------------|----------------------|---------------------------------------|
| IN WITH THE FLYNNS            | BBC                  | Dir. Dominic Brigstocke & Ben Kellett |
| WALK LIKE A PANTHA            | Cheeky Boy Films     | Dir. Dan Cadan                        |
| A PASSIONAYYE                 | Rollem Productions   | Dir. Kay Mellor                       |
| FIVE DAYS                     | BBC                  | Dir. Various                          |
| LAW & ORDER                   | Kudos                | Dir. Various                          |
| WALKING THE DEAD              | BBC                  | Dir. Various                          |
| DOCTORS                       | BBC                  | Dir. Various                          |
| THE STREET                    | Granada Television   | Dir. Various                          |
| THE STREET                    | Granada Television   | Dir. Various                          |
| HEARTBEAT                     | Yorkshire Television | Dir. Various                          |
| FLORENCE NIGHTINGALE          | 1 A Productions      | Dir. Norman Stone                     |
| DALZIEL AND PASCOE            | BBC                  | Dir. Various                          |
| GOLDPLATED                    | Channel 4            | Dir. Various                          |
| SILENT WITNESS                | BBC                  | Dir. Various                          |
| THE BILL                      | BBC                  | Dir. Various                          |
| EASTENDERS                    | BBC                  | Dir. Various                          |
| ROME                          | HD Vision Studios    | Dir. Various                          |
| THE ROYAL                     | Yorkshire Television | Dir. Various                          |
| THE DEBT                      | BBC                  | Dir. Jon Jones                        |
| IN SEARCH OF THE BRONTES      | BBC                  | Dir. Samira Osman                     |
| FAT FRIENDS                   | Rollem Productions   | Dir. Various                          |
| FLESH AND BLOOD               | BBC                  | Dir. Julian Farino                    |
| BOB AND ROSE (Carole)         | Red Productions      | Dirs. Julian Fariano & Joe Wright     |
| FAT FRIENDS (Liz)             | Yorkshire Television | Dir. David Wheatley                   |
| CASUALTY (Eve)                | BBC Television       | Dir. Tony Garn                        |
| BAND OF GOLD (Mrs Richards)   | Granada Television   | Dir. Richard Laxton                   |
| FLESH BLOOD & MAGIC (Barbara) | BBC Television       | Dir. Julian Farino                    |

|                             |                |                          |
|-----------------------------|----------------|--------------------------|
| GOLDPLATED (Beth White)     | Channel 4      | Dir. Julie Anne Robinson |
| LOVE AND REASON (Mel Lynch) | BBC Television | Dir. Carol Wilkes        |
| ROME (The Diviner)          | HBO            | Dir. Julian Farino       |
| SILENT WITNESS (Mary)       | BBC Television | Dir. Phillipa Langdale   |

## SKILLS / QUALIFICATIONS

---

Excellent ear for accents;

American-New England, Birmingham, Geordie, London, Northern, Yorkshire

---